

VISUAL STORY **BUS PROJECTS**

Bus Projects is committed to providing a safe, accessible and welcoming environment for our visitors, staff and volunteers. If you have any questions about accessibility or feel uncomfortable at any point during your visit, please approach our team.

NOTES ON ACCESS

ANIMALS

Bus Projects welcomes service animals, guide dogs, and also pets to the space. Please ensure you look after your animal's needs while onsite.

SEATING

Bus Projects is a predominantly standing venue, however, we will happily provide seats for anyone who requires them. Please contact Bus Projects via email to arrange this or ask upon arrival.

QUIET SPACES

Please contact Bus Projects if you would like to arrange a designated quiet area at our opening events.

LIGHTING

Lighting is provided by fluorescent batons. However, specific shows may feature low or no lighting.

TEMPERATURE CONTROL

Bus Projects is not climate controlled.

WHEELCHAIR ACCESSIBILITY

Bus Projects is located on the ground floor. Please note the door width measurements as follows: Front door, Gallery 2 entrance, Screen entrance: all 79cm; Gallery 1 entrance: 81 cm; Toilet entrance: 68 cm.

PUBLIC TOILETS

Accessible, gender neutral and single occupant toilets are located within the Bus Projects gallery.

INTERPRETATION

Exhibition opening events do not generally include Auslan interpretation however can be provided upon request. Please email Bus Projects if there is an event you would like interpreted.

SOCIAL MEDIA

We welcome rigorous and respectful dialogue on our social media platforms. However, any posts that are offensive, defamatory, discriminatory or otherwise harmful will be removed.

HOW TO GET TO BUS PROJECTS

You can only get inside Bus Projects through the Little Miller Street entrance.

Getting There-Parking

Bus Projects is located at 7 Little Miller Street, Brunswick East.

There are numerous secure and street parking options in the area. Two-hour free parking is available on Glenlyon Road (north of the gallery). All day paid parking options are available nearby at The East Brunswick Village.

Accessible parking / drop-off areas

An accessible drop-off area and off-street parking bay is available for short-term use and is located at the front of the gallery.

Getting There-Public Transport

Bus Projects is a short two-minute walk from tram Stop 20 at the corner of Miller/Nicholson St on the 96 tram line. Only some trams on this route are serviced by a mix of low floor and high floor trams. Read more at the PTV site [here](#).

[Video from tram stop on Nicholson Street to Bus Projects.](#)

VISUAL STORY



MAIN ENTRANCE

Bus Projects is located on the ground floor of a two-story beige building with a grey-blue door. There is a white A-frame outside with the 'Bus Projects' on it.

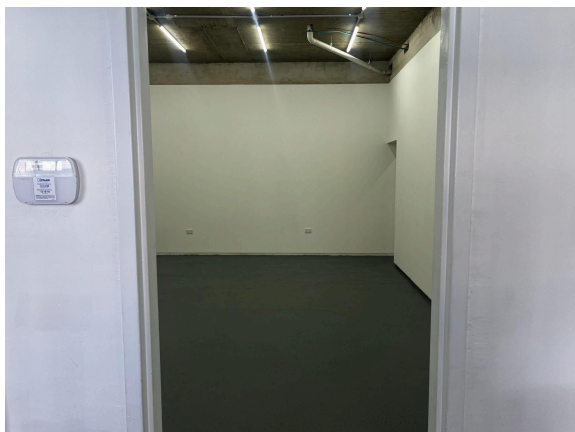
The door is always open during the opening hours: Thursday - Friday 12-5pm, Sat 10 am - 2 pm.

The main entrance is wheelchair accessible with a gentle slope made of cement.



The Entrance Hall

The entrance hall connects the Office (left-hand side), Gallery 1 and Room Sheet Corner (straight ahead), and project room/bookshop space (right-hand side).





Room Sheet Corner

You are welcome to explore the room sheets about our current exhibitions in the Room Sheet Corner and begin your visit.



Gallery 1

The entrance to Gallery 1 is directly in front of the main entrance. The access to the bathroom is at the rear right of Gallery 1.

Gallery 1 is a square space with a flat floor and bright lighting. The entrance of Gallery 1. There is a gap of 3 cm between the entrance hall and Gallery 1 so please mind your step.



Bus Project/Bookshop space

Through an arc-shaped open entrance, the Screen Space is immediately to the right as you enter the venue.

The entrance and pathway to Gallery 2 and the bathroom are at the rear left of this exhibition room.



Gallery 2

To enter Gallery 2, walk through the Project/Bookshop space.

Gallery 2 is a rectangular space.

The bathroom is behind the white partition wall at the end of this gallery. The entrance to Gallery 2. There is a gap of 3 cm between the screen space and Gallery 2 so please mind your step.



Bathroom

The bathroom is both gender neutral and wheelchair accessible.

The bathroom is located at the back of the venue, and there is a white partition wall to separate the bathroom and Gallery 2.

There is no stage and ground level difference in the bathroom.

The light switch for the bathroom is located on the wall to the right.

